

Holyhead Towing

Tough Dependable Workboats

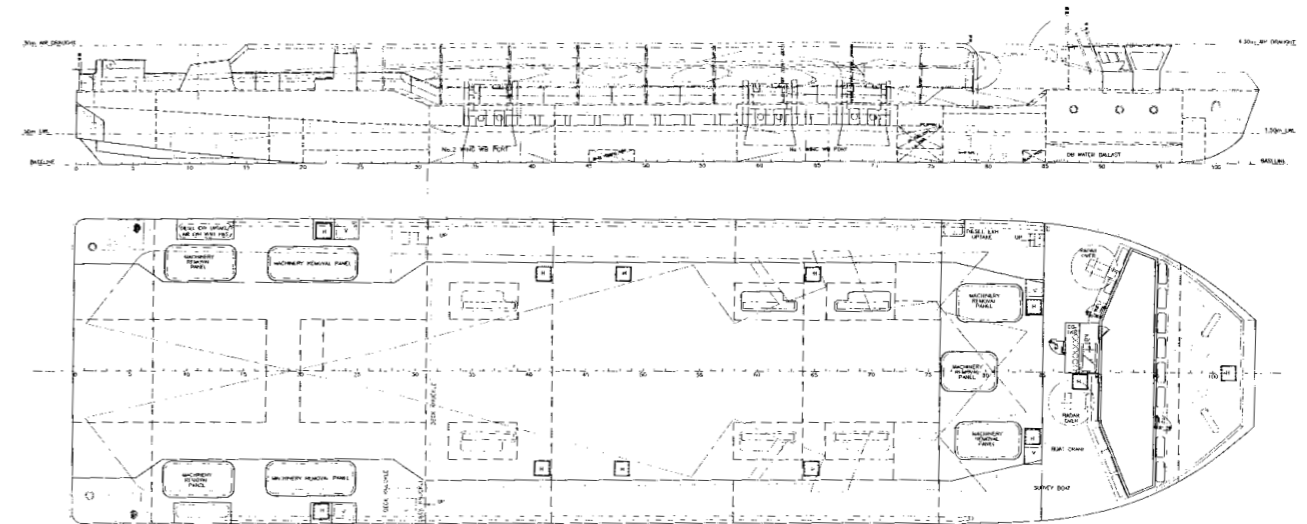
Afon Dyfrdwy

Airbus A380 Wing Transport Vessel

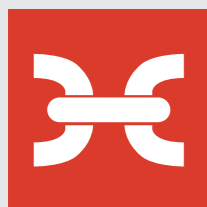


Afon Dyfrdwy

Airbus A380 Wing Transport Vessel



| | |
|---------------------------|--|
| Built | McTay Marine Ltd. Bromborough, UK |
| Classification | Lloyds AI IWW 'roll on roll off barge' +LMC UMS, UK MCA Class IX A |
| Dimensions | Length 57.6m Beam 14.8m Draft 1.5m at 4.3m air draft |
| Main Engines | 2 x Cummins KTA19M3 engines, 477kw each, driving Jastram Azimuth jet thrusters type W60. Bowthrusters - 2 x Cummins 6CTA8.3M engines, 190kw each driving Jastram Azimuth jet thrusters type W20 |
| Free running speed | 9 knots |
| Navigation Aids | River radar, sea radar, 2 x VHF radios, Navtex receiver, RTK DGPS, gyro compass, echosounder, electronic survey / route planning / navigation system, autopilot, telephone, searchlights, tide gauge receivers |
| Equipment | Low level cargo deck with 300 tonne capacity, lift system to lower cargo pallet legs in to the hull for low air draft, electronically controlled ballasting and draft / air draft measurement system |
| Accommodation | For 4 crew in single cabins |



Holyhead Towing Company Ltd

Newry Beach Yard, Holyhead, Anglesey LL65 1YB UK
 t. +44 (0)1407 760111
 f. +44 (0)1407 764531
 w. www.holyheadtowing.co.uk
 e. towing@holyhead.co.uk



Holyhead Towing Company Ltd

Newry Beach Yard, Holyhead, Anglesey LL65 1YB UK
 t. +44 (0)1407 760111
 f. +44 (0)1407 764531
 w. www.holyheadtowing.co.uk
 e. towing@holyhead.co.uk



Details believed to be correct at time of printing but not guaranteed.

HT_Dyfrdwy_v1